

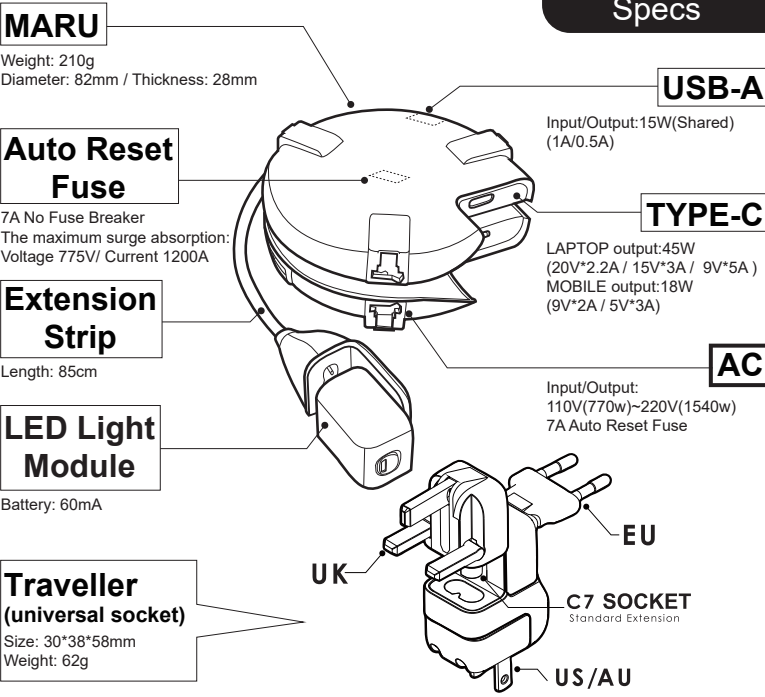
TOFU MARU Traveller Bundle

User Manual

Feature



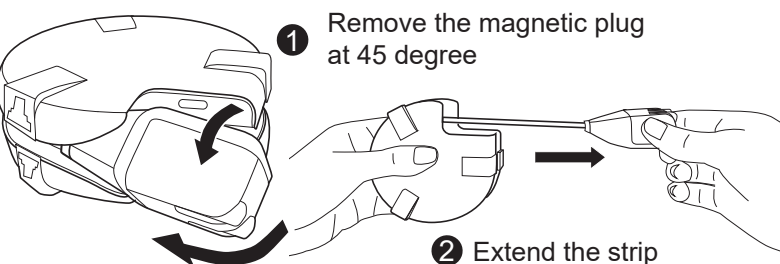
Specs



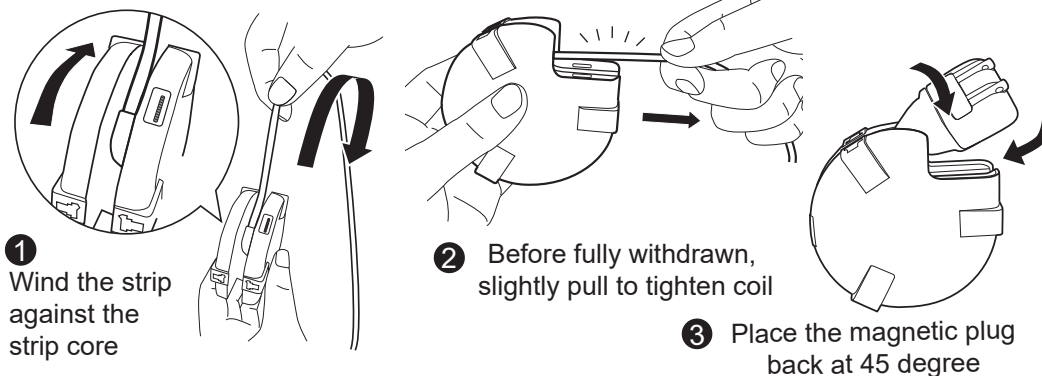
Attention

- Keep your hand dry when using MARU. Avoid water or moisture.
- Keep away from kid.
- Stop using when the plug or strip is damaged.
- Please read the instruction before using this product.
- MARU is non-grounding device. Refrain from using appliance that require grounding.
- For indoors use only.
- Do not cover MARU so as to allow heat-dissipation.
- Refrain from placing MARU on uneven surface to avoid drops and damage.
- Do not disassemble.
- Do not over extend or fold the extension strip.
- To maintain battery life, please charge LED module at least once every 3 months.
- Do not insert sharp objects or into the socket.
- Avoid use of high powered electric conductive objects devices such as hair dryer and kettle.
- Please use MARU within the temperature range from 0°C to 40°C.
- MARU is not voltage transformer. Plug in after confirming the device is applicable or connected to voltage transformer.

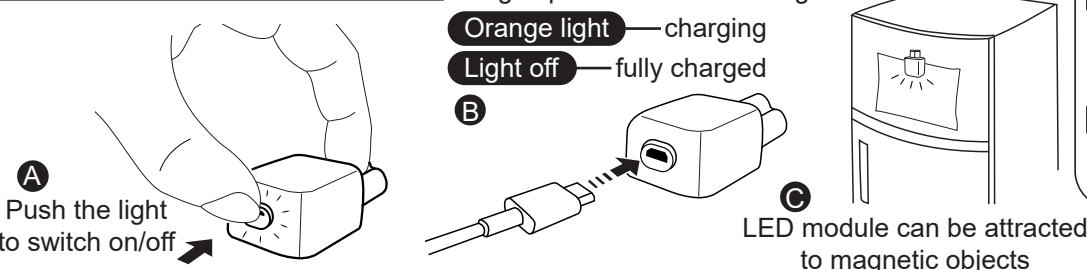
How to pull out the extension strip



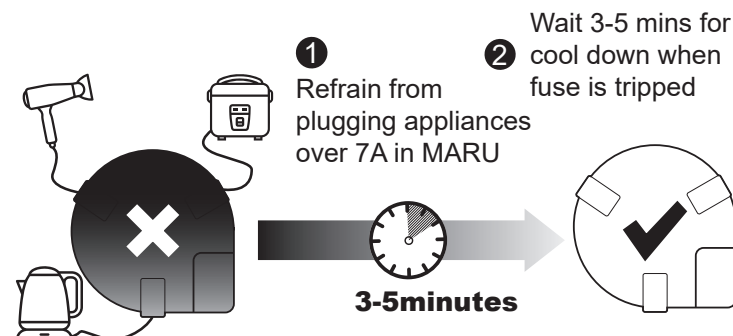
How to coil the extension strip



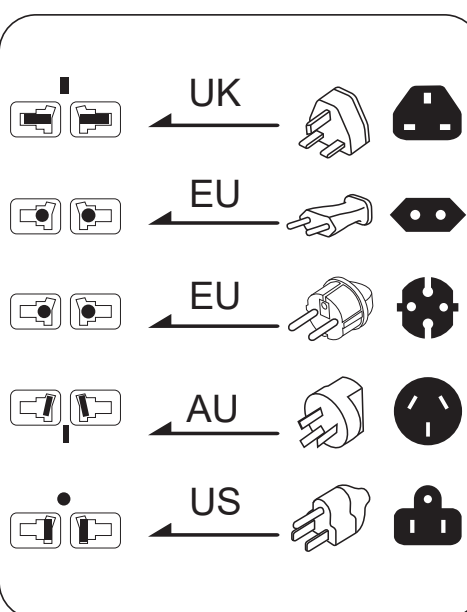
How to use the LED module



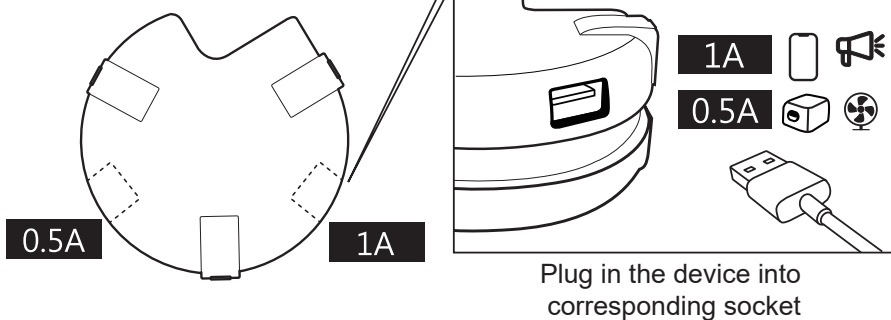
Instruction



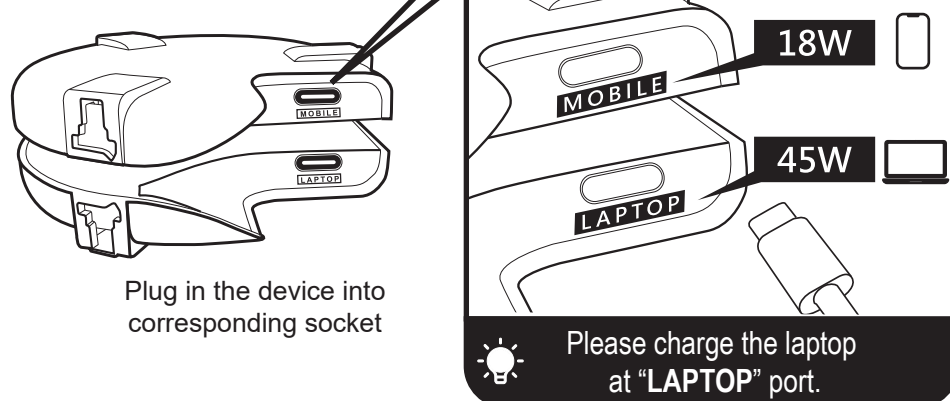
About USB socket



About USB socket

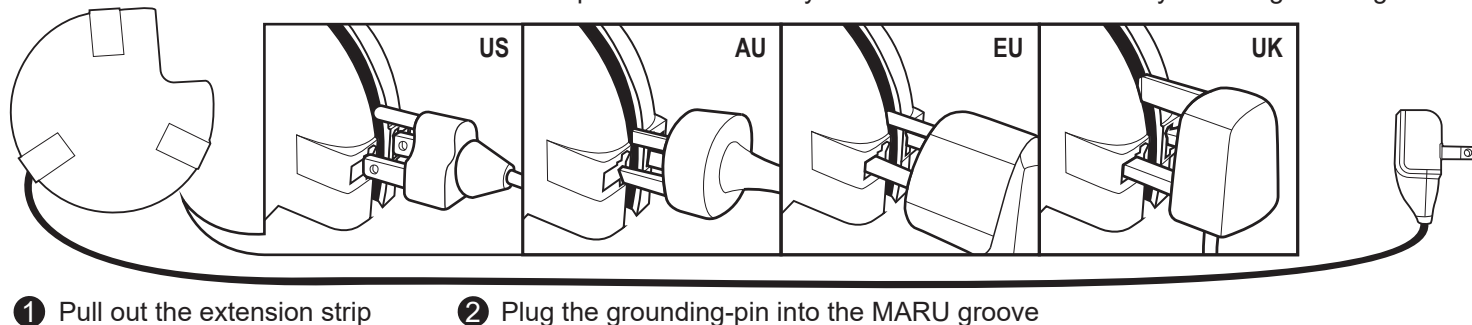


About TYPE-C socket



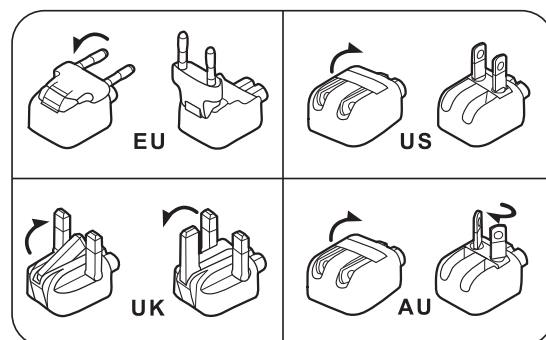
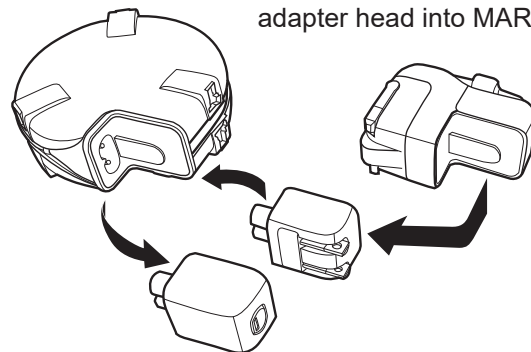
About the grounding wire

- ⚠ Recommended to use non-grounding devices.
Otherwise please ensure that your device can be used safely without grounding.



About adapter

- A Attach the desired adapter head into MARU



- B International adaptor usage

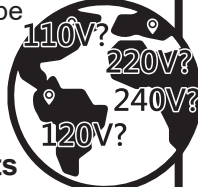
FAQ

Does AC socket support different voltages?

MARU does not transform AC voltage. Devices should only be used when it supports local voltage. DC allows voltage from 100 to 240V, which can be used globally.

Q: Can we use hair dryer with MARU?

A: It depends on if the appliance supports local voltage.



Why is charging speed slow in TYPE-C socket?

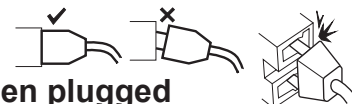
- It may be that your device or cable doesn't support PD charging. Please confirm if the device or cable support fast charging or use OEM cable.
- Make sure to use the correct port.
LAPTOP port: laptop/higher power 18~45W
MOBILE port: mobile/less power less than 18W
- If TYPE-C requires higher watts, it is suggested to use the original transformer to plug in the MARU AC socket.

MARU heats up or stops working when charging

It is common that MARU heats up when functioning. Please refer to Instruction "About Auto Reset Fuse". Before reusing, please check if there is overloading of devices plugged in.

MARU makes noise when device is plugged in

This is a normal situation. The noise comes from the subtle electric current in the MARU.



Socket outlet sparks when plugged

It is normal for a spark to occur when the plug is in contact with the socket. Please reduce the time of intermittent contact to reduce sparks.

Power is not stable when charging.

AC: It may be due to overloading, which leads to fuse disconnect continually. Please remove overload device, or cut down loading. Try again after 3 mins.

DC: It may be due to poor connection or incompatibility. Please replug or clean the plug head. If still not working, please contact us.