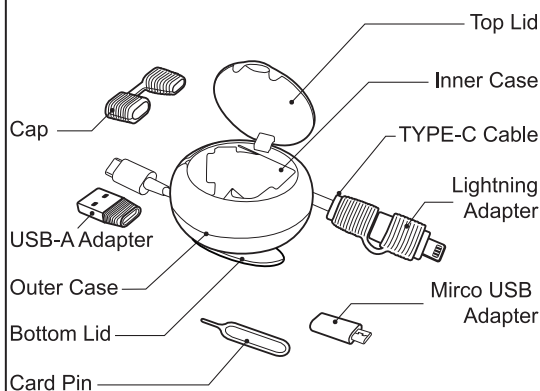


Parts Diagram



1. Please read the user menu before operating.
2. Keep away from kids.
3. Avoid contact with detergent or other chemical products.
4. Cable is specifically for data transferring and charging only. Refrain from using it for any other purpose.
5. When cable is damaged, please stop using and replace it.
6. Please keep cable away from sharp objects to avoid damage.
7. Keep your hand dry when using device.

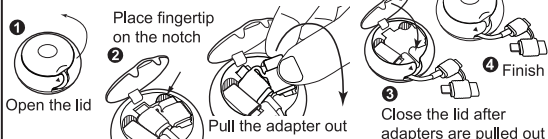
Avoid contact with water or a humid environment.



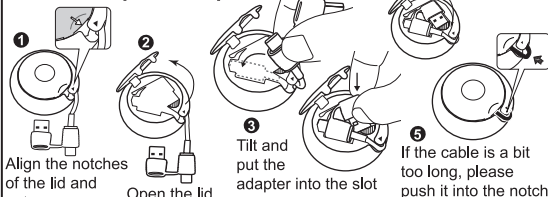
Attention



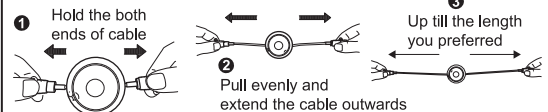
How to take out the adapter



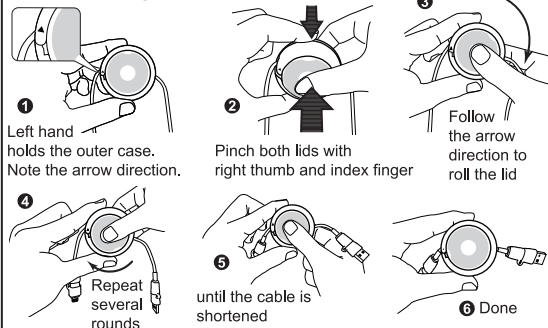
How to keep the adapter



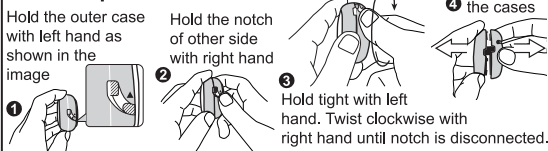
How to extend the cable



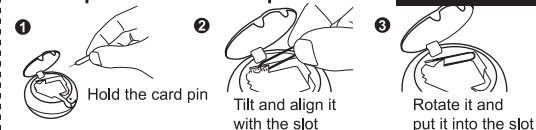
How to coil up the cable



How to open the outer case



How to put back the card pin

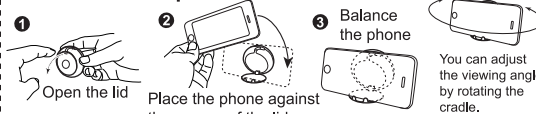


Instruction

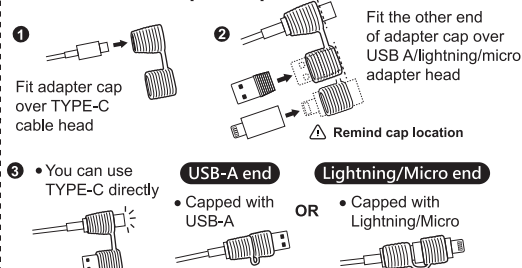
How to put back the SIM card



How to use it as phone cradle



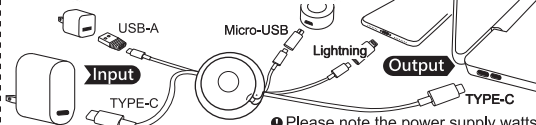
How to install adapter cap



How to use the adapter



Finding the suitable adapter for your device



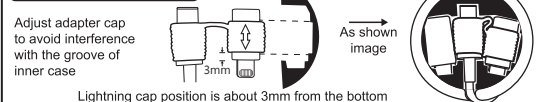
The lid cannot be closed properly

There 2 possibilities: A: The notch of the lid is not aligned with the one of outer case B: The adapter cap is not worn properly and obstruct the lid

To align the notches

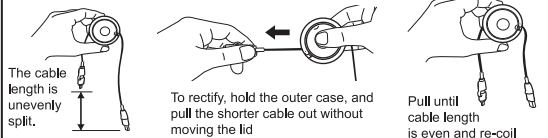


Realign the adapter cap



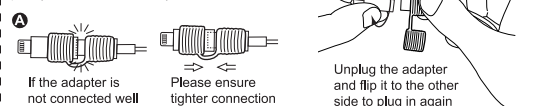
Cable is withdrawn unevenly

When fully withdrawn, one end of cable protrudes from the case, and it is too long for the cable head to be stored in the inner case



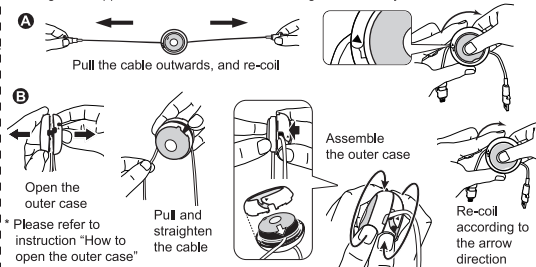
When the adapter is not working

First, test if the cable is working. Second, check if the adapter ports is dogged with dust or poorly connected. If not, try solution A or B.



The coil is stuck while withdrawing the cable.

Please check if the lid is coiled in the right direction of the arrow. Winding in the opposite direction leads to cable tangled. Please try solution A or B.



FAQ